



**BROOKLYN  
FRIENDS  
SCHOOL**

An abstract painting depicting a sunset or sunrise scene. The sky is filled with vibrant, wavy bands of orange, yellow, and red, transitioning into a darker, muted blue at the top. Below the sky is a dark, textured expanse representing water. Two small, light-colored silhouettes of figures are standing on the water's surface, looking towards the horizon. The overall style is expressive and painterly.

**2018-2019**

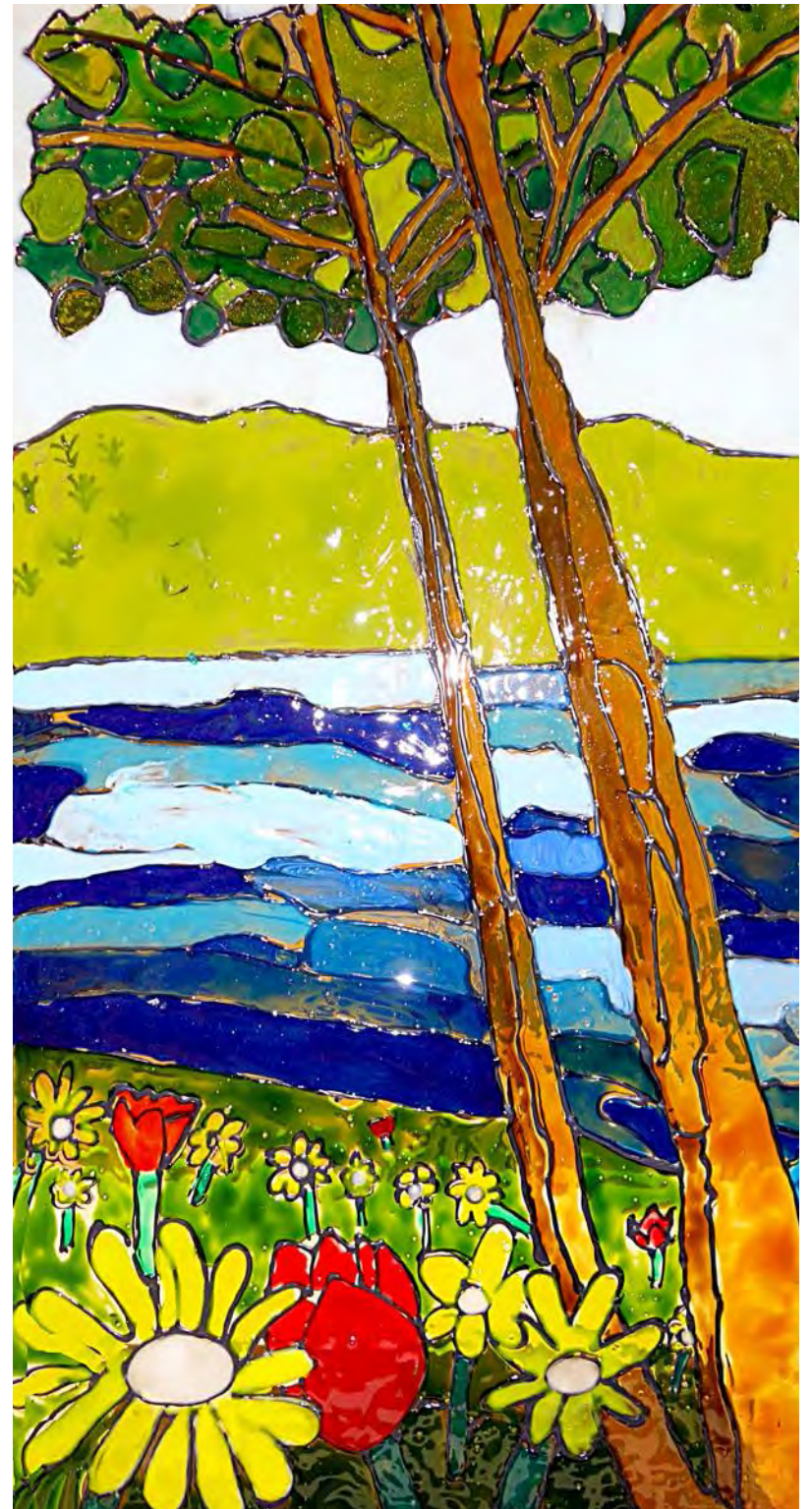


peaceful



*If we are peaceful, if we are happy,  
we can smile, and everyone in our  
family, our entire society,  
will benefit from our peace.*

**-THICH NHAT HANH**



# SEPTEMBER 2018

Sunday	Monday	Tuesday	Wednesday	Thursday	Friday	Saturday
	<b>August 27</b> Faculty Work Day <i>All faculty return</i> Gr. 7-12 fall athletes practice	<b>August 28</b> Faculty Work Day Gr. 7-12 fall athletes practice	<b>August 29</b> Faculty Work Day Gr. 7-12 fall athletes practice	<b>August 30</b> Faculty Work Day Gr. 7-12 fall athletes practice	<b>August 31</b> <i>No school business today; buildings open for teachers</i> Registration Deadline for fall afterschool	<b>1</b> Buildings Closed
<b>2</b> Buildings Closed  Week 1	<b>3</b> Labor Day / School & Buildings Closed	<b>4</b> Gr. 9 Retreat & Gr. 12 Retreat <b>6 pm Parent Orientation:</b> • All Kindergarten • All Gr. 5 • Gr. 6-8 Parents new to BFS	<b>5</b> <b>9:30am MS</b> New Student Orientation	<b>6</b> First Day of School for Gr. K-12 <i>Half Day for Gr. K/1</i> <b>AS</b> for Gr. 2, 3, 4 & 5-8 begins	<b>7</b> <b>AS</b> for Gr. K/1 begins	<b>8</b>
<b>9</b>  Week 2	<b>10</b> Rosh Hashanah / School and Buildings Closed	<b>11</b>	<b>12</b> First Day of Preschool <b>6 pm Preschool Parent Orientation</b> (all parents) <b>6 pm Family Center Parent Orientation</b>	<b>13</b> First Day of phase-in at Family Center	<b>14</b> <b>6 pm US</b> New Parent Orientation for all Gr. 9 & new Gr. 10/11 parents  Founders Day and launch of "Giving & Growing with Friends"	<b>15</b>
<b>16</b>  Week 1	<b>17</b> Afterschool Specials for <b>LS</b> & <b>MS</b> begin <b>6 pm College Night</b> for senior families	<b>18</b>	<b>19</b> Yom Kippur / School and Buildings Closed	<b>20</b>	<b>21</b>	<b>22</b>
<b>23</b>  Week 2	<b>24</b> <b>PS4s AS</b> begins	<b>25</b> <b>6 pm LS</b> Curriculum Night for Gr. K & 1 <b>PS3s AS</b> begins	<b>26</b> <b>8:30 am PAT</b> New Parent Coffee Hour	<b>27</b> <b>6 pm LS</b> Curriculum Night for Gr. 2, 3 & 4 <b>6 pm US</b> Curriculum Night  Gr. 8 Trip to Bear Mountain	<b>28</b> Gr. 8 Leadership Event	<b>29</b>
<b>30</b>						





**BROOKLYN  
FRIENDS  
SCHOOL**

# Reflective

*The highest levels of performance come to people who are centered, intuitive, creative, and reflective – people who know to see a problem as an opportunity.*

–DEEPAK CHOPRA





# OCTOBER 2018

Sunday	Monday	Tuesday	Wednesday	Thursday	Friday	Saturday
	<b>1</b>	<b>2</b> <b>8:30 am</b> Breakfast with Head of School for parents new to BFS <b>6 pm PAT</b> Class Parent Reception <b>PS AS</b> Specials begin	<b>3</b> <b>6 pm MS</b> Curriculum Night for Gr. 7 & 8	<b>4</b>	<b>5</b>	<b>6</b>
Week 1						
<b>7</b>	<b>8</b> Indigenous Peoples Day / School & Buildings Closed	<b>9</b> BFS Faculty/Staff Professional Day / No school for students	<b>10</b> <b>6 pm</b> Mythbusters: the Truth Behind Standardized Testing for all <b>US</b> families PSAT for Juniors	<b>11</b> <b>6 pm MS</b> Curriculum Night for Gr. 5 & 6	<b>12</b>	<b>13</b>
Week 2						
<b>14</b> <b>11 am</b> Family Meeting for Worship with Brooklyn Monthly Meeting	<b>15</b> <b>6:30 pm</b> Gr. 8 Parent Reception	<b>16</b> <b>6:30 pm FC</b> Curriculum Night for Red Room Afternoon Class	<b>17</b> <b>6 pm</b> FAFSA Workshop for senior families	<b>18</b> <b>8:30 am &amp; 6 pm</b> Affordability Workshop for all parents <b>6:30 pm</b> Family Center Curriculum Night	<b>19</b> <b>8:30 am PAT</b> General Meeting <b>6 pm</b> Preschool Curriculum Night	<b>20</b>
Week 1						
<b>21</b>	<b>22</b>	<b>23</b>	<b>24</b> Gr. 4 Trip to Nature's Classroom NYSAIS 5-Year Reaccreditation Visit	<b>25</b> <b>6 pm MS</b> Halloween Dance & Social	<b>26</b> <b>MS/US</b> Faculty Report Writing Day <b>MS/US</b> students not in attendance	<b>27</b>
Week 2						
<b>28</b>	<b>29</b>	<b>30</b> <b>6:30 pm</b> CSS Profile Workshop for senior families	<b>31</b> <b>9 am</b> Gr. 4 Halloween Dance Performance			
Week 1						



# Embracing

*When it all boils down, it's about embracing each others' stories and maybe even finding that synergy to collaborate for the common good.*

—DHANI JONES





# NOVEMBER 2018

Sunday	Monday	Tuesday	Wednesday	Thursday	Friday	Saturday
Week 1				1 Winter Athletes (Gr. 7-12) begin practicing	2 5 pm Latinx Heritage Family Event	3 9 am Annual Young Womyn of Strength Conference
4 Week 2	5	6 PS/LS Parent Conferences PS/LS students not in attendance	7	8 MS/US Parent Conferences MS students are not in attendance; US students have a half-day	9 MS/US Parent Conferences MS/US students not in attendance FC Parent Conferences no classes	10
11 Week 1	12	13	14	15 5 pm MS/US Musical	16 7 pm MS/US Musical PS/LS Parent Conferences PS/LS students not in attendance	17 7 pm MS/US Musical
18 Week 2	19 5:45 pm AS Potluck	20 PS & LS Fall Family Programs Gr. 8-12 Community Issues Conference No AS Specials today	21 Fall Break / School and Buildings Closed	22 Fall Break / School and Buildings Closed	23 Fall Break / School and Buildings Closed	24
25 Week 1	26	27 8:30 am PS 4s Parent Tour of LS	28	29	30 PAT Book Fair	



# Open

*I realized that you have to be honest.  
When you're being open, that's when people  
connect with you. You just have to be yourself.*

—LITTLE SIMZ





# DECEMBER 2018

Sunday	Monday	Tuesday	Wednesday	Thursday	Friday	Saturday
						<b>PAT</b> Winterfest & Book Fair <b>1</b>
<b>2</b>  Week 2	<b>3</b> <b>6 pm</b> College Night for Junior Families	<b>4</b> <b>8:30 am</b> Gr. 4 Parent Tour of MS	<b>5</b>	<b>6</b>	<b>7</b>	<b>8</b>
<b>9</b>  Week 1	<b>10</b>	<b>11</b> <b>6 pm</b> Jazz Concert	<b>12</b> <b>6 pm</b> Chorus Concert	<b>13</b> <b>4 pm</b> IB Dance Showcase <b>6 pm</b> Orchestra Concert	<b>14</b> <b>AS</b> Specials Open House	<b>15</b>
<b>16</b>  Week 2	<b>17</b> 12th Grade Exam Week <b>AS</b> Specials Open House	<b>18</b>	<b>19</b> Gr. 8-11 Minimester	<b>20</b> Gr. 8-11 Minimester Last day of Fall Afterschool	<b>21</b> Traditional Holiday Sing with 12 Noon Dismissal for all students	<b>22</b>
<b>23</b>  Week 1	<b>24</b> Buildings closed	<b>25</b> Buildings closed	<b>26</b>	<b>27</b>	<b>28</b>	<b>29</b>
<b>30</b>  Week 2	<b>31</b> Buildings closed					



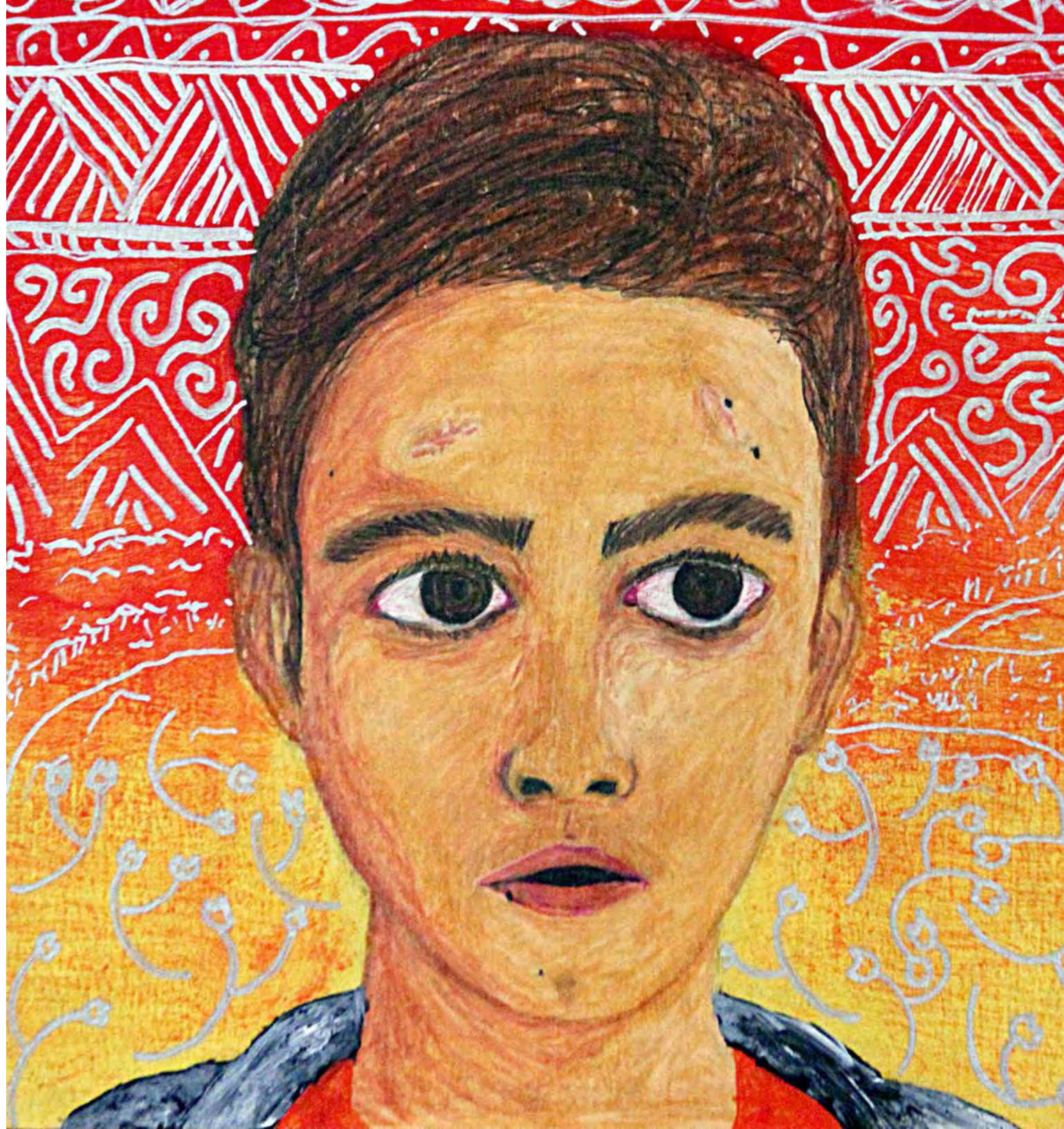


**BROOKLYN  
FRIENDS  
SCHOOL**

# Integrity

*What I do shows people  
what kind of person I am.*

—CESAR CHAVEZ

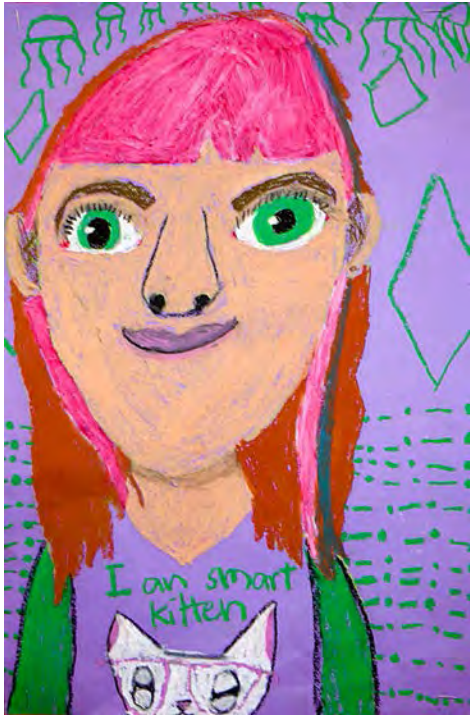




# JANUARY 2019

Sunday	Monday	Tuesday	Wednesday	Thursday	Friday	Saturday
		1	2	3	4	5
		Winter Break / School Closed				
		Buildings closed				
6	7	8	9	10	11	12
Week 1	Classes and Afterschool resume <b>5 pm Gap Year Fair</b> <i>for all <b>US</b> families</i>		Young Alumni Events			<b>2 pm PAT LS</b> Family Folk Dance
13	14	15	16	17	18	19
Week 2	<b>AS</b> Winter/Spring Specialty Classes begin <b>US</b> Gr 9-11 Exam Review Week			<b>6 pm LS</b> Specialist Evening <i>for K &amp; Gr. 1 Parents</i>	"Simple and Powerful" tribute to Dr. King	
20	21	22	23	24	25	26
Week 1	Dr. Martin Luther King, Jr. Day / School & Buildings Closed	<b>US</b> Gr 9-11 Exams	<b>8:30 am PAT</b> General Meeting		<b>MS/US</b> End of First Semester	<b>10 am Gr. 3/4</b> Family Math & Science Day
27	28	29	30	31		
Week 2	<b>MS/US</b> Start of Second Semester		<b>LS</b> Horizons Reading Challenge begins			





# Diverse

*Ignorance fears  
diversity as an  
invading enemy,  
while wisdom  
welcomes diversity  
in an alliance of  
friendship.*

—WES FESLER



# FEBRUARY 2019

Sunday	Monday	Tuesday	Wednesday	Thursday	Friday	Saturday
Week 2					<b>1</b> <b>6 pm PAT</b> Black History Month Celebration film screening	<b>2</b>
<b>3</b> Week 1	<b>4</b>	<b>5</b> <i>Lunar New Year</i>	<b>6</b>	<b>7</b>	<b>8</b> <b>4 pm &amp; 7:30 pm MS</b> Play	<b>9</b> <b>3:30 pm &amp; 7 pm MS</b> Play
<b>10</b> Week 2	<b>11</b> <b>5 pm</b> Case Studies and College Program for Junior Families	<b>12</b>	<b>13</b>	<b>14</b>	<b>15</b>	<b>16</b>
<b>17</b> Week 1	<b>18</b> Presidents Day Holiday / School & Buildings Closed	<b>19</b> Faculty/Staff Professional Day Students not in attendance	<b>20</b>	<b>21</b>	<b>22</b> <b>PAT</b> Black History Month Celebration	<b>23</b>
<b>24</b> Week 2	<b>25</b> Spring Athletes (Gr. 7-12) begin practicing	<b>26</b>	<b>27</b>	<b>28</b> <b>LS</b> Horizons Reading Challenge concludes		





**BROOKLYN  
FRIENDS  
SCHOOL**



# Nurturing

*Let us grow strong roots  
Watering and nurturing  
Each other daily.*

~SANJO JENDAYI

# MARCH 2019

Sunday	Monday	Tuesday	Wednesday	Thursday	Friday	Saturday
					1	2
Week 2					PS/LS Conferences PS/LS students not in attendance	
3	4	5	6	7	8	9
Week 1					4 pm & 7 pm Dance Concert  PS/LS Conferences PS/LS students not in attendance	4 pm & 7 pm Dance Concert
10	11	12	13	14	15	16
Week 2		6 pm PAT Embracing Diversity event	4:30 pm IB Music Concert			
17	18	19	20	21	22	23
	Spring Break / School Closed; FC, PS & LS Spring Programs					
24	25	26	27	28	29	30
	Spring Break / School Closed					
31						





# Intentional

*Every moment counts.*

*Every second matters.*

—ELIE WIESEL

Sunday	Monday	Tuesday	Wednesday	Thursday	Friday	Saturday
	<b>1</b> Classes and Afterschool resume	<b>2</b> <b>US</b> Gr. 12 IB Mock Exams	<b>3</b> IB Art Show	<b>4</b> IB Art Show	<b>5</b> IB Art Show <b>7 pm</b> Spring Gala at 1 Hotel Brooklyn Bridge	<b>6</b>
Week 1						
<b>7</b>	<b>8</b> <b>US</b> Gr. 12 IB Mock Exams	<b>9</b> <b>US</b> Privilege Day	<b>10</b>	<b>11</b>	<b>12</b> <b>FC</b> Spring Parent Conferences; no <b>FC</b> classes	<b>13</b>
Week 2						
<b>14</b>	<b>15</b>	<b>16</b> <b>6 pm</b> Enrollment Welcome Event for New <b>MS/US</b> parents	<b>17</b> <b>6 pm</b> Enrollment Welcome Event for New <b>PS/LS</b> parents <b>MS/US</b> Parent Conferences Half day for <b>MS/US</b> students	<b>18</b> <b>MS/US</b> Parent Conferences Half day for <b>MS/US</b> students	<b>19</b> Good Friday; Passover School & Buildings Closed	<b>20</b>
Week 1						
<b>21</b>	<b>22</b>	<b>23</b>	<b>24</b>	<b>25</b>	<b>26</b> <b>7 pm US</b> Play Last day of classes for seniors	<b>27</b> <b>7 pm US</b> Play
Week 2						
<b>28</b>	<b>29</b> IB Exams begin	<b>30</b>				
Week 1						



# Truth

*Do not fear truth, let  
it be ever so contrary  
to inclination and  
feeling. Never give  
up the search after  
it; and let me take  
courage, and try  
from the bottom  
of my heart to do  
that which I believe  
truth dictates.*

—ELIZABETH FRY



Sunday	Monday	Tuesday	Wednesday	Thursday	Friday	Saturday
Week 1			<b>1</b> <b>6 pm PAT General Meeting</b>  <i>IB Exams take place through May 17</i>	<b>2</b> <b>12:30 pm</b> Brooklyn & Staten Island Independent School College Fair for all juniors	<b>3</b> <b>6 pm</b> Bridge Film Festival 20th Anniversary Screening	<b>4</b> <b>9 am</b> New <b>PS</b> 4s visit <b>9:30 am</b> Enrollment "Up on the Roof" party
Week 2	<b>5</b>	<b>6</b>	<b>7</b> <b>6 pm</b> Jazz Concert	<b>8</b> <b>6 pm</b> Chorus Concert	<b>9</b> <b>6 pm</b> Orchestra Concert <b>PAT</b> Used Book Fair	<b>10</b>  <b>PAT</b> Used Book Fair
Week 1	<b>12</b>	<b>13</b> <b>7:30 am</b> <b>PAT</b> Faculty/Staff Breakfast	<b>14</b> <b>15</b> <b>16</b> <b>17</b> <b>18</b>	<b>15</b> <b>16</b> <b>17</b> <b>18</b>	<b>17</b> <b>AS</b> Specials Open House <i>IB Exams conclude</i>	<b>18</b> <b>11 am</b> Horizons at BFS Parent Orientation
Week 2	<b>19</b> <b>20</b> <b>AS</b> Specials Open House	<b>21</b> <b>22</b> <b>23</b> <b>24</b> <b>25</b>	<b>21</b> <b>22</b> <b>23</b> <b>24</b> <b>25</b>	<b>22</b> <b>23</b> <b>24</b> <b>25</b>	<b>23</b> <b>24</b> <b>25</b>	<b>24</b> <b>25</b>
Week 1	<b>26</b> <b>27</b> <b>28</b> <b>29</b> <b>30</b> <b>31</b>	<b>27</b> <b>28</b> <b>29</b> <b>30</b> <b>31</b>	<b>28</b> <b>29</b> <b>30</b> <b>31</b>	<b>29</b> <b>30</b> <b>31</b>	<b>30</b> <b>31</b>	<b>31</b>



# Loving Kindness



*When we practice loving kindness and compassion*



*we are the first ones to profit. -RUMI*



Sunday	Monday	Tuesday	Wednesday	Thursday	Friday	Saturday
						Alumni Day <b>1</b>
<b>2</b>	<b>3</b> Gr. 9-11 Exams & Assessments Gr. 7 Exams Gr. 8 Exams  Week 2	<b>4</b> <i>Eid al-Fitr</i>  <b>AS</b> Private Music Lesson Showcase Gr. 7 Exams Gr. 8 Exams	<b>5</b>  <b>FC</b> Closing/afternoon class Gr. 8 Exams	<b>6</b> <b>FC</b> Closing Day Gr. 8 Exams <i>Last day of PS Afterschool</i> Gr. 3 Trip to Clearpool	<b>7</b> <b>PS</b> Goodbye Day <b>MS</b> Semester 2 ends	<b>8</b>
<b>9</b> <b>5 pm</b> Class of 2019 Baccalaureate & Family Reception  Week 1	<b>10</b> <b>MS</b> Day in Prospect Park <b>US</b> Recognition Ceremony & Closing Last day of <b>LS/MS</b> Afterschool	<b>11</b> Last day for <b>LS/MS</b> <b>10 am</b> Rising Seniors Workshop <b>11 am</b> Gr 4 Moving Up <b>1:30 pm</b> Gr 8 Moving Up <b>6 pm</b> Commencement	<b>12</b> Faculty Work Day Jazz Camp begins	<b>13</b> Faculty Work Day	<b>14</b> Faculty Work Day <i>Last day for faculty</i>	<b>15</b>
<b>16</b>	<b>17</b>	<b>18</b> Jazz Camp ends	<b>19</b> Family Center Camp, BFS Summer Camp and BFS Summer Arts begin	<b>20</b>	<b>21</b>	<b>22</b>
<b>23</b>	<b>24</b>	<b>25</b>	<b>26</b>	<b>27</b> Horizons at BFS begins	<b>28</b>	<b>29</b>
<b>30</b>						
Please give to the 2018-19 Brooklyn Friends Fund by June 30th.						





# Joy

*Joy is the simplest form of gratitude.*

—KARL BARTH



**BROOKLYN  
FRIENDS  
SCHOOL**

Brooklyn Friends School  
375 Pearl Street  
Brooklyn, NY 11201  
brooklynfriends.org

# Community

Brooklyn Friends School is pleased to present our 2018-2019 academic year calendar, illustrated by student-created art from preschool through 12th grade. This year's calendar has an added dimension, a theme of *Community* growing from the All School Quaker Life Committee's new initiative, *Testimony of the Year*. Quakers have no set creed. Instead Quakers have testimonies – core truths or beliefs – that they endeavor to live by.

The Committee surveyed the entire BFS faculty and staff to determine a Testimony of the Year, and the *Testimony of Community* was the overwhelming choice. Committee members then worked together to select a word and a quote related to community for each month of the calendar. We hope to inspire all BFS community members to aim toward building an environment where everyone is valued and to support one another by being inclusive and sharing kindness, patience, and wisdom.

*This calendar is for educational use within  
Brooklyn Friends School.*

